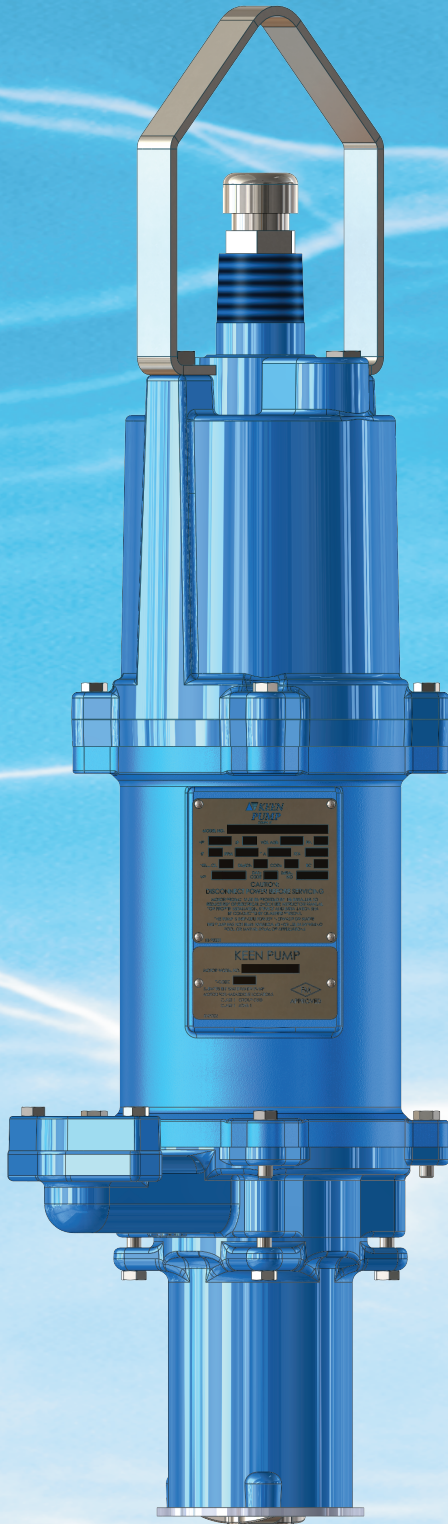
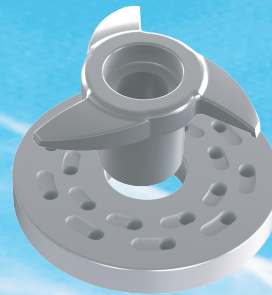


PROGRESSIVE CAVITY GRINDER PUMP "EPCG15-21C(SL)"



- COMPACT DESIGN FOR EASY INSTALLATION IN ANY STATION
- LIGHT WEIGHT FOR EASY HANDLING
- INDUSTRY BEST STAINLESS STEEL GRINDER ASSEMBLY FOR DEPENDABLE SERVICE



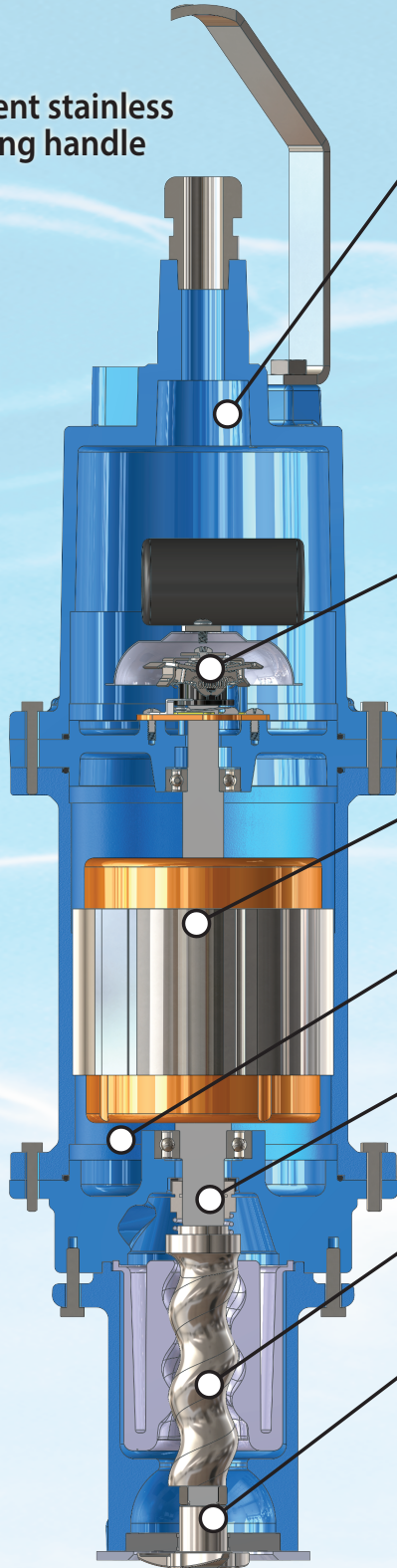
Slicer-Cutter

- RUGGED HIGH-TENSILE IRON PUMP CONSTRUCTION
- DEPENDABLE 50-YEAR PROVEN DESIGN
- NO CONTROL PANEL REQUIRED TO OPERATE THE PUMP



PROGRESSIVE CAVITY GRINDER PUMP "EPCG15-21C(SL)"

Convenient stainless steel lifting handle



CORD ENTRY
• Double Barrier Moisture Protection

BUILT-IN START SWITCH ASSEMBLY
-No control panel required

HIGH-TORQUE MOTOR HANDLES ALL GRINDING CONDITIONS

OIL FILLED MOTOR CHAMBER KEEPS MOTOR COOLED AND LUBRICATES BEARINGS

ABRASIVE RESISTANT SILICON CARBIDE SHAFT SEAL

PREMIUM STAINLESS STEEL ROTOR FOR LONG LIFE

STAINLESS STEEL GRINDER ASSEMBLY
• HEAT TREATED
• HARDENED
• PRECISION GROUND

POWERFUL PERFORMANCE

PRESSURE

FLOW

0 PSI

16 GPM

20 PSI

15 GPM

40 PSI

14 GPM

60 PSI

12 GPM

80 PSI

10 GPM