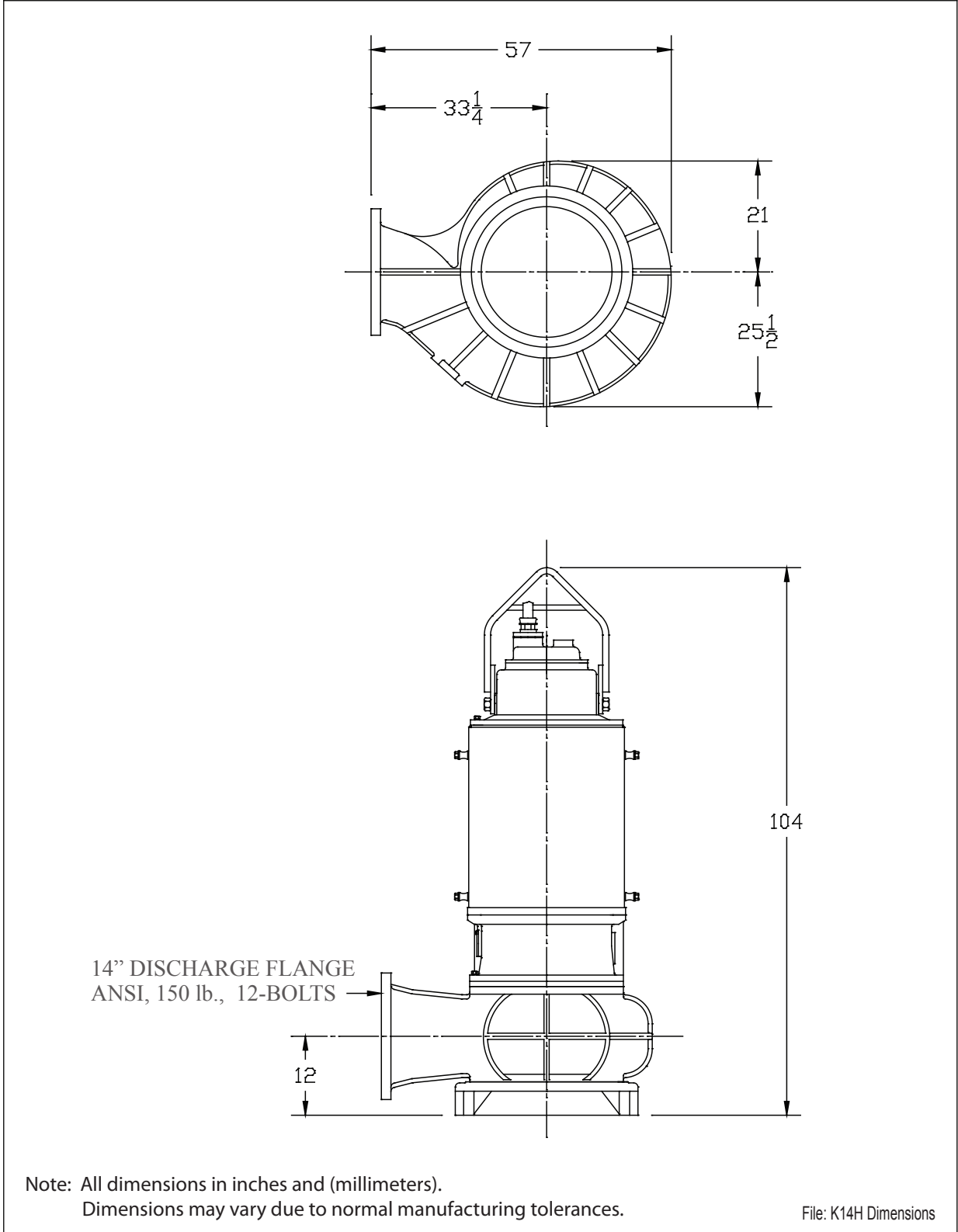
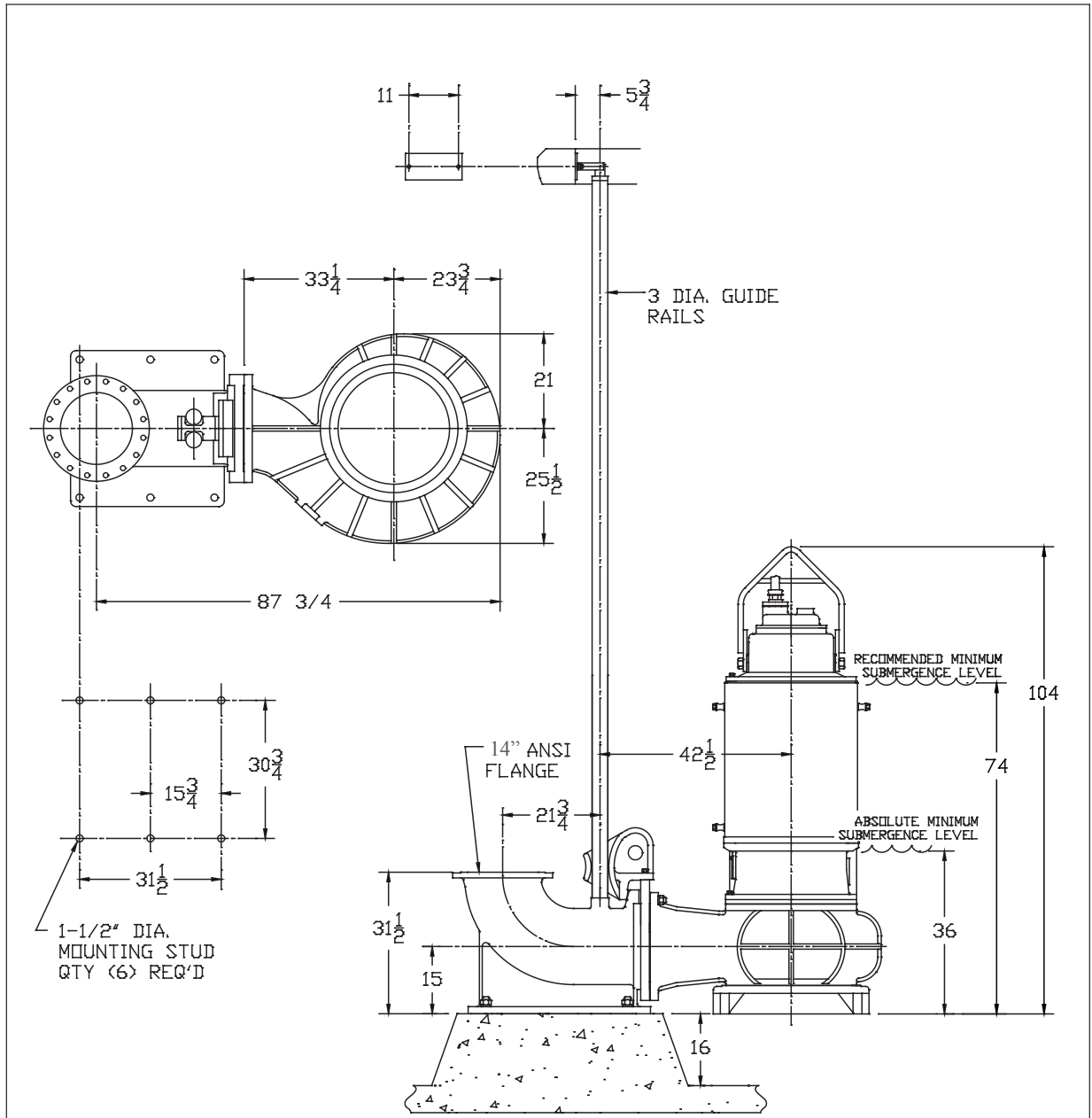


Pump Series	K14H	14" SUBMERSIBLE SEWAGE PUMPS
DIMENSIONAL DATA		



Note: All dimensions in inches and (millimeters).
Dimensions may vary due to normal manufacturing tolerances.

Pump Series	K14H	14" SUBMERSIBLE SEWAGE PUMPS
LIFTOUT DIMENSIONAL DATA		



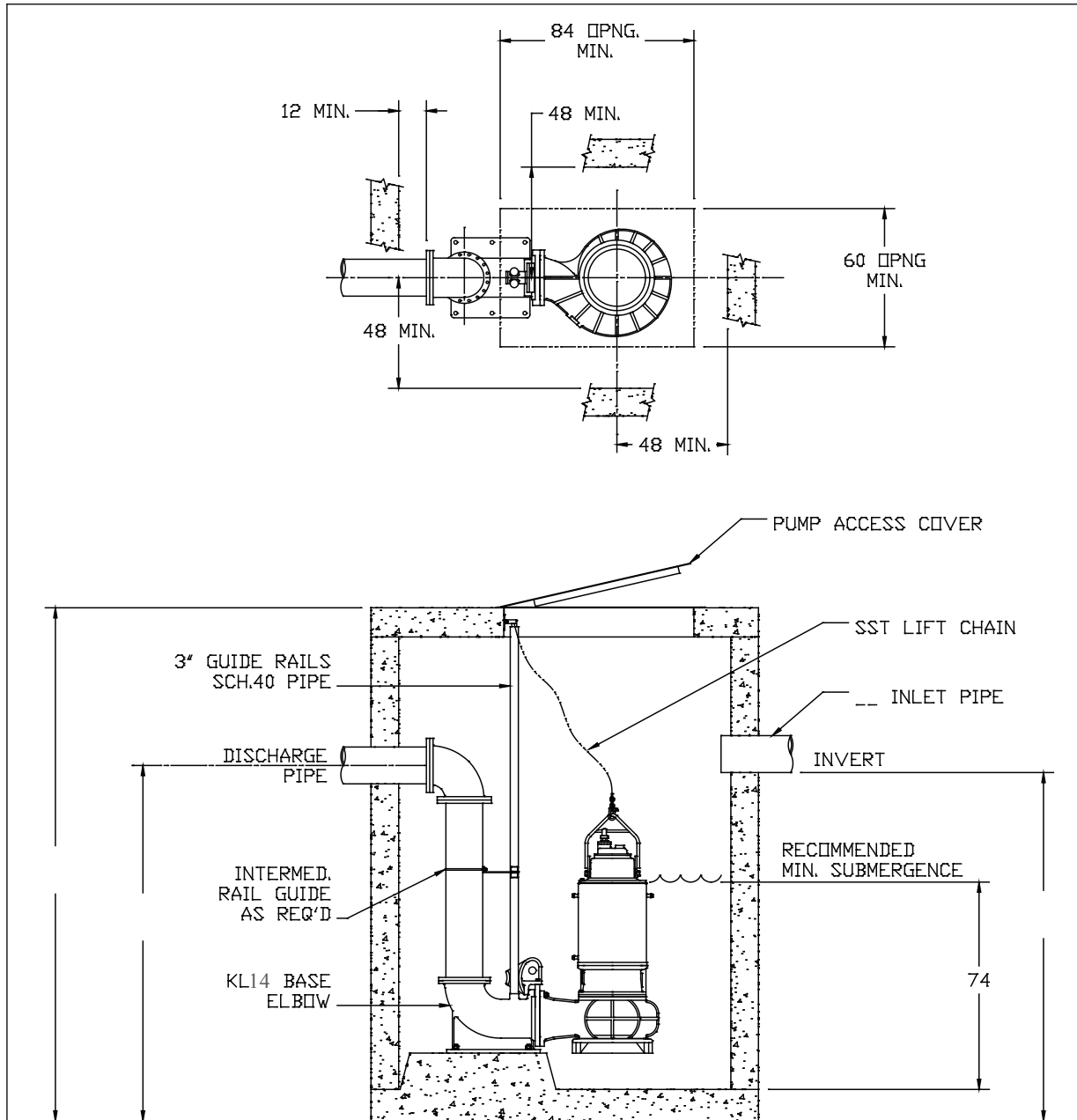
Notes:

1. All dimensions in inches and (millimeters).
2. Discharge flange ANSI 150 lb. unless noted.
3. Absolute minimum and recommended minimum submergence levels noted.
4. Discharge base elbow must be placed above sump bottom as noted.
5. Dimensions may vary due to normal manufacturing tolerances.
6. If discharge pipe is larger than discharge elbow, eccentric reducer must be used limited to 2X larger maximum.

Pump Series

K14H

14" SUBMERSIBLE SEWAGE PUMPS

SIMPLEX INSTALLATION DIMENSIONAL DATA

Notes:

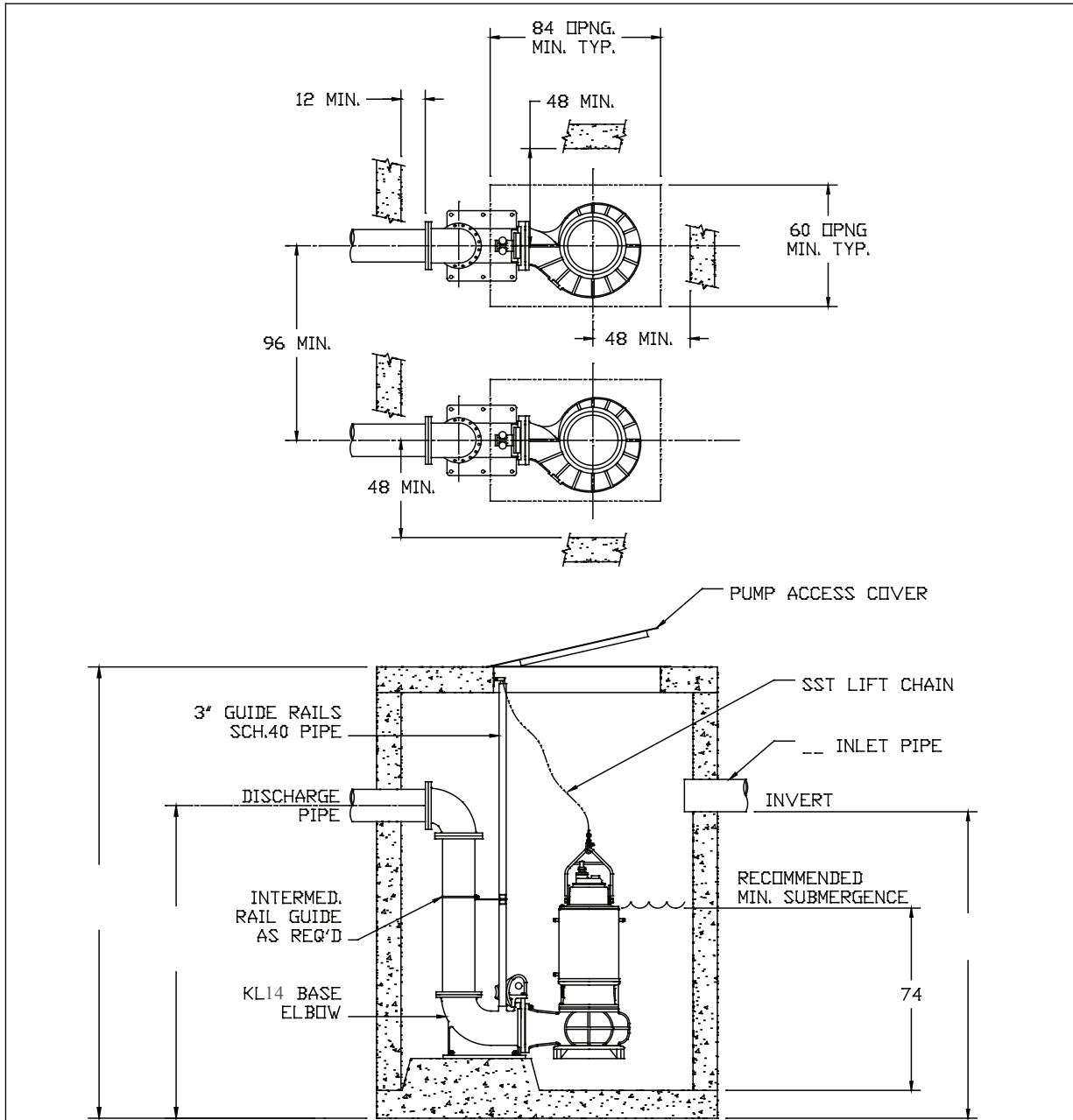
1. All dimensions in inches and (millimeters).
2. Pump spacing per (HI) Hydraulic Institute standards.
3. Refer to pump dimension and liftout dimension sheets for more details.
4. Recommended minimum submergence levels noted.
5. Discharge base elbow must be placed above sump bottom as noted.
6. Dimensions may vary due to normal manufacturing tolerances.
7. If discharge pipe is larger than discharge elbow, eccentric reducer must be used limited to 2X larger maximum.

Pump Series

K14H

14" SUBMERSIBLE SEWAGE PUMPS

DUPLEX INSTALLATION DIMENSIONAL DATA



Notes:

1. All dimensions in inches and (millimeters).
2. Pump spacing per (HI) Hydraulic Institute standards.
3. Refer to pump dimension and liftout dimension sheets for more details.
4. Recommended minimum submergence levels noted.
5. Discharge base elbow must be placed above sump bottom as noted.
6. Dimensions may vary due to normal manufacturing tolerances.
7. If discharge pipe is larger than discharge elbow, eccentric reducer must be used limited to 2X larger maximum.