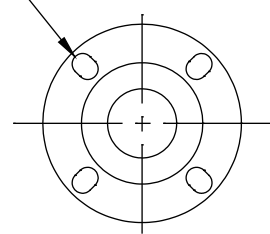


\* PUMP STANDARD HORIZONTAL FLANGE  
 (2-1/2" OR 3" ANSI) STANDARD BASIN  
 PACKAGE DISCHARGE (2" PIPING)  
 ACCEPTABLE WITH MACERATED  
 SEWAGE SLURRY

\* DISCHARGE FLANGE "SLOTS"  
 FOR OPTIONAL 2.5" OR 3" ANSI  
 DISCHARGE, CLASS 125., 4-BOLT



NOTE: ALL DIMENSIONS FOR REFERENCE ONLY

| REV | INITIALS | DATE       |
|-----|----------|------------|
| B   | SE       | 01/06/2017 |
| A   | SE       | 03/26/2015 |

|   |                           |  |  |
|---|---------------------------|--|--|
|   |                           | <b>KEEN PUMP CO.</b><br>471 US HWY 250 EAST<br>ASHLAND, OHIO 44805 | PHONE: 419-207-9400<br>FAX: 419-207-8031 |
| <b>TITLE</b><br>3-7.5HP HIGH FLOW/HIGH HEAD GR. PUMP DIMENSIONS |                           |  |  |
| <b>SCALE</b><br>NTS   |                           | <b>DWG. #</b><br>KN-28   | <b>REV.</b><br>B                         |
| <b>DWG. BY</b><br>SE  | <b>DATE</b><br>01/27/2014 |  |  |