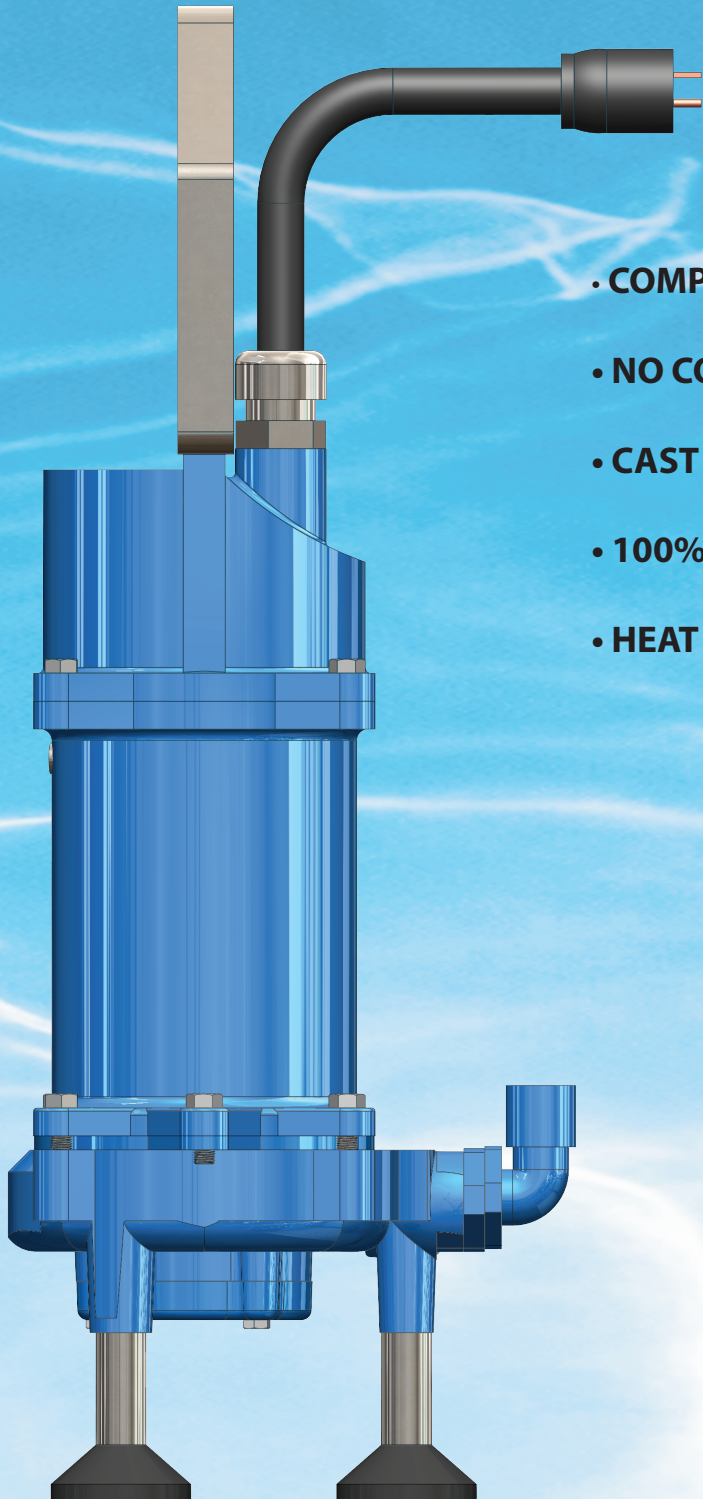
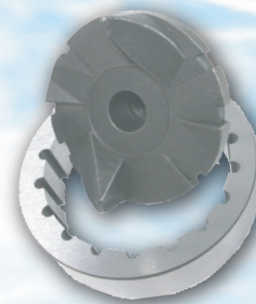


CENTRIFUGAL GRINDER PUMP "RKG15-21C"



- **COMPACT DESIGN EASILY FITS INTO ANY STATION**
- **NO CONTROL PANEL REQUIRED TO OPERATE PUMP**
- **CAST IRON PUMP CONSTRUCTION**
- **100% SOLID STAINLESS STEEL GRINDER PARTS**
- **HEAT TREATED AND HARDENED FOR LONG LIFE**



"Radial" Cutter
(STANDARD)



CENTRIFUGAL GRINDER PUMP "RKG15-21C"

POWERFUL PERFORMANCE

PRESSURE

FLOW

0 PSI

35 GPM

10 PSI

33 GPM

20 PSI

32 GPM

30 PSI

30 GPM

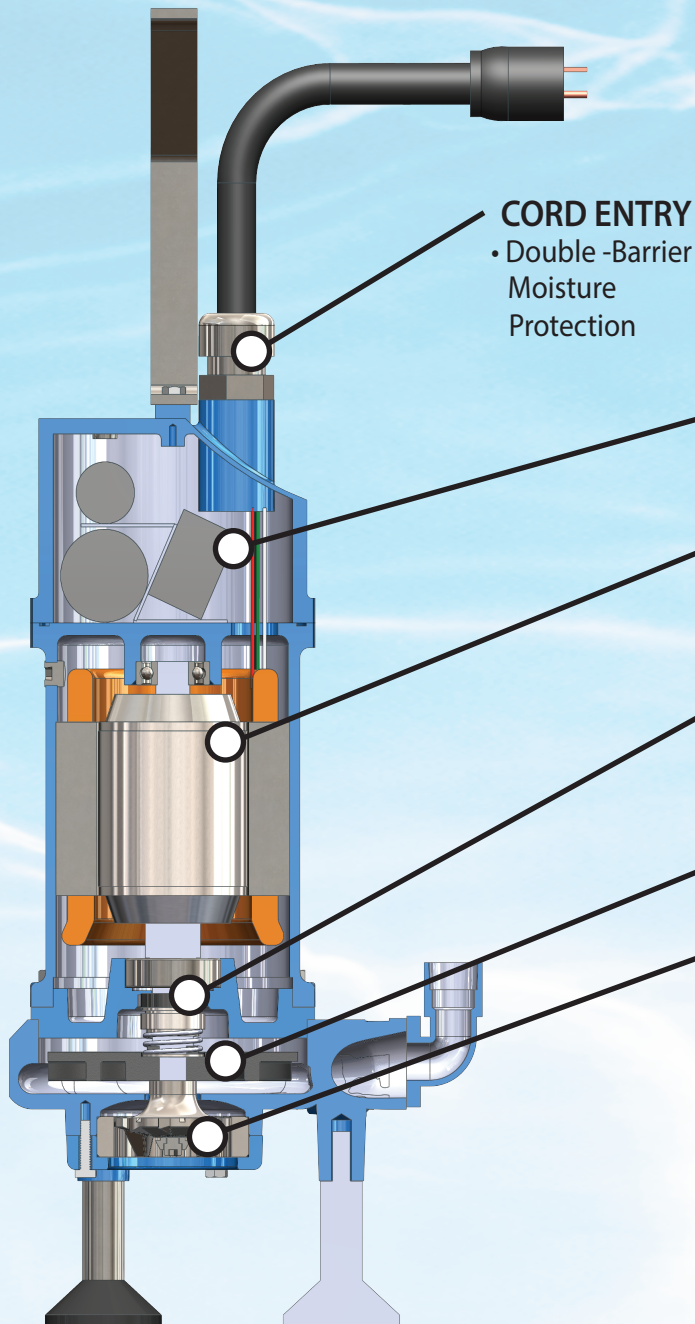
40 PSI

20 GPM

50 PSI

5 GPM

Convenient stainless
steel lifting handle



CORD ENTRY

- Double -Barrier
Moisture
Protection

INTERNAL START KIT

-No control panel required

**HIGH-TORQUE MOTOR OIL-COOLED
FOR SUPERIOR HEAT DISSIPATION**

**SUPERIOR SINGLE MECHANICAL SEAL-
SILICON CARBIDE w/VITON ELASTOMERS**

RECESSED, VORTEX DUCTILE IRON IMPELLER

ADVANCED CUTTING SYSTEM

- Highly Efficient Solids-Slicing
- User-Friendly Field Service
- Hardened Stainless Steel



471 US HWY 250 East · Ashland, Ohio 44805
419.207.9400 fax 419.207.8031
www.keenpump.com